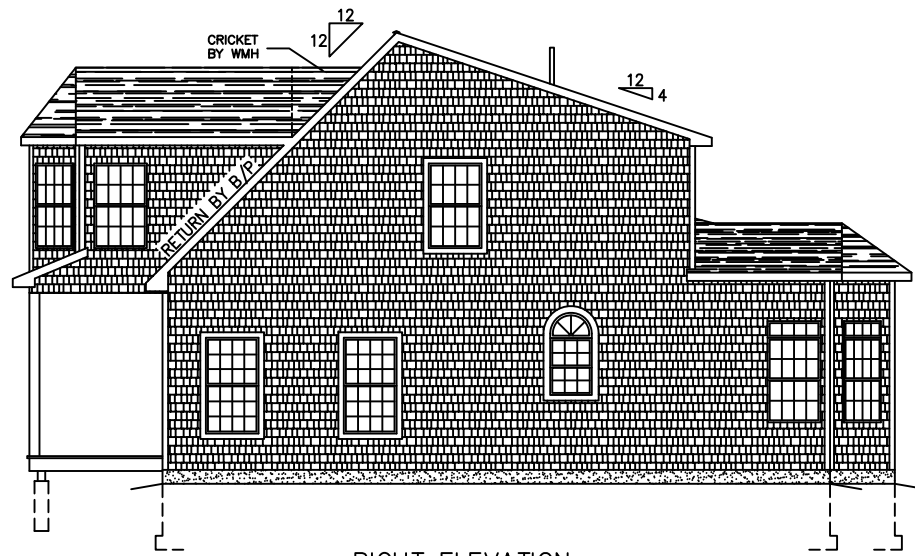


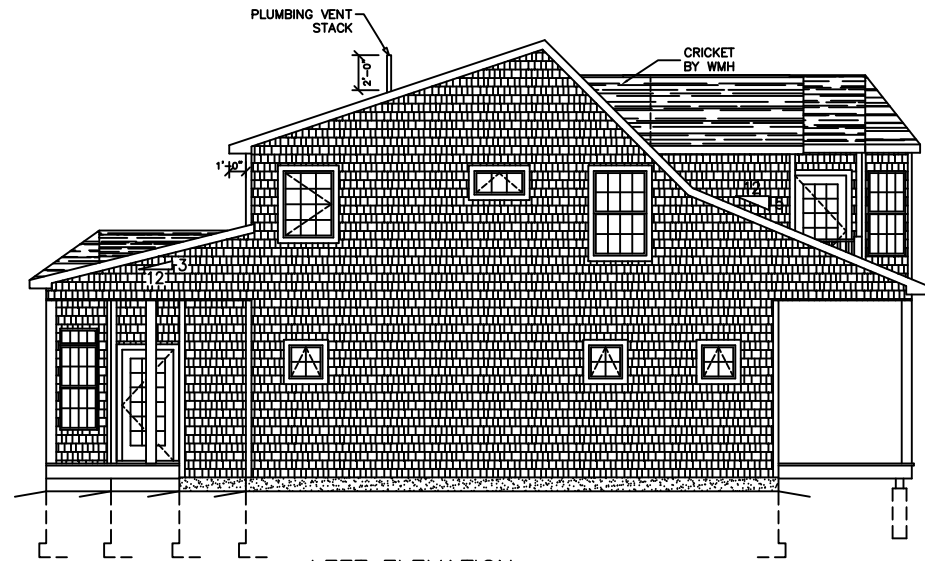


FRONT ELEVATION

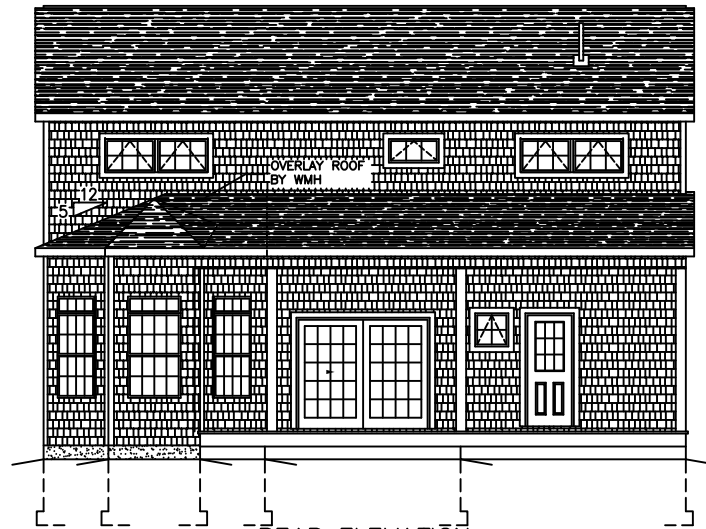
ALL EXT. STAIRS, STEPS, RAILS & GUARDS TO BE DESIGNED, SUPPLIED AND INSTALLED BY B/P



RIGHT ELEVATION



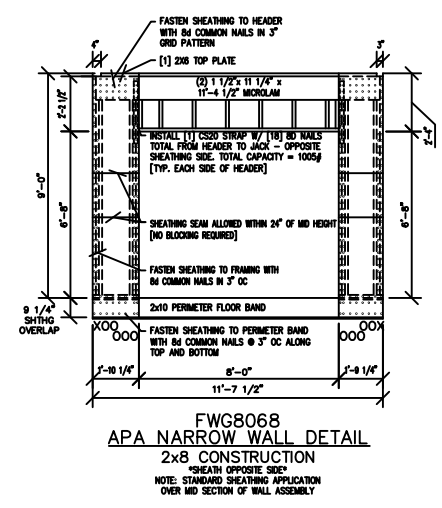
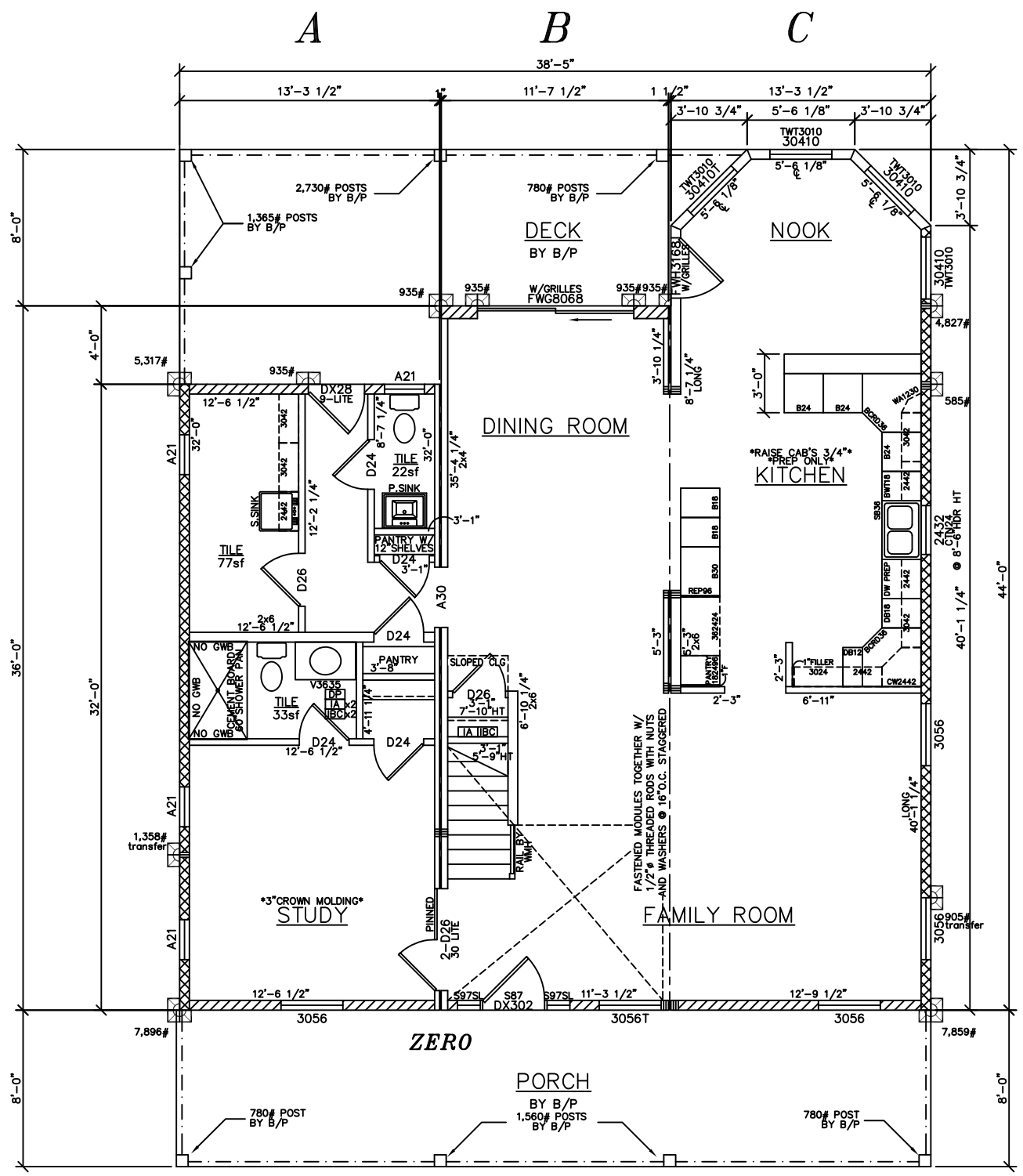
LEFT ELEVATION



REAR ELEVATION

SEE STANDARD NOTES & DETAILS DWG #8

USE GROUP: R5	BUILDER: HOMEOWNER:	SERIAL No. 11112	THIRD PARTY INSPECTION AGENCY
CONST. TYPE: VB		PRODUCTION No. 5874	PE / RA
DESIGNER: V. GIORGIO		REVISION	
DATE: 09/13/11		DATE	
SCALE: 1/8" = 1'-0"		CHECK	
PAGE: 1 A		V. GIORGIO	10/12/07
<p>'6' BOX CAPE CTM-R ELEVATIONS</p> <p>Westchester Modular Homes Inc 30 Reagans Mill Road, Wingdale, New York, 12594 Tel (845)832-9400 Fax (845)832-6698</p>			



1,421 S.F.
1st. FLR.

9'-0" ENTIRE 1ST FLOOR CEILING HT
ALL WINDOWS TO BE ANDERSEN STORMWATCH
-SOLID SMOOTH 6 PANEL DOORS-
-UPGRADE BASE & WINDSOR CASING-
-R11 INSULATION ON ALL INTERIOR WALLS EXCEPT FACE WALLS OF CLOSETS-

* DESIGNED TO THE FOLLOWING:
-2009 INTERNATIONAL RESIDENTIAL CODE, NJ AMENDMENTS
-2009 NAPHCC NATIONAL STANDARD PLUMBING CODE, NJ AMENDMENTS
-2008 NATIONAL ELECTRICAL CODE, NJ AMENDMENTS
-2009 INTERNATIONAL ENERGY CONSERVATION CODE, NJ AMENDMENTS

NOTE:
ALL WINDOWS WITH A SILL HEIGHT LESS THAN 24" ABOVE FINISHED FLOOR AND WITH A EXT. HEIGHT OF GREATER THAN 6'-0" TO GRADE SHALL BE EQUIPPED WITH FALL PROTECTION SUPPLIED AND INSTALLED BY B/P ON SITE IN ACCORDANCE W/ R612.3

115 MPH WIND ZONE

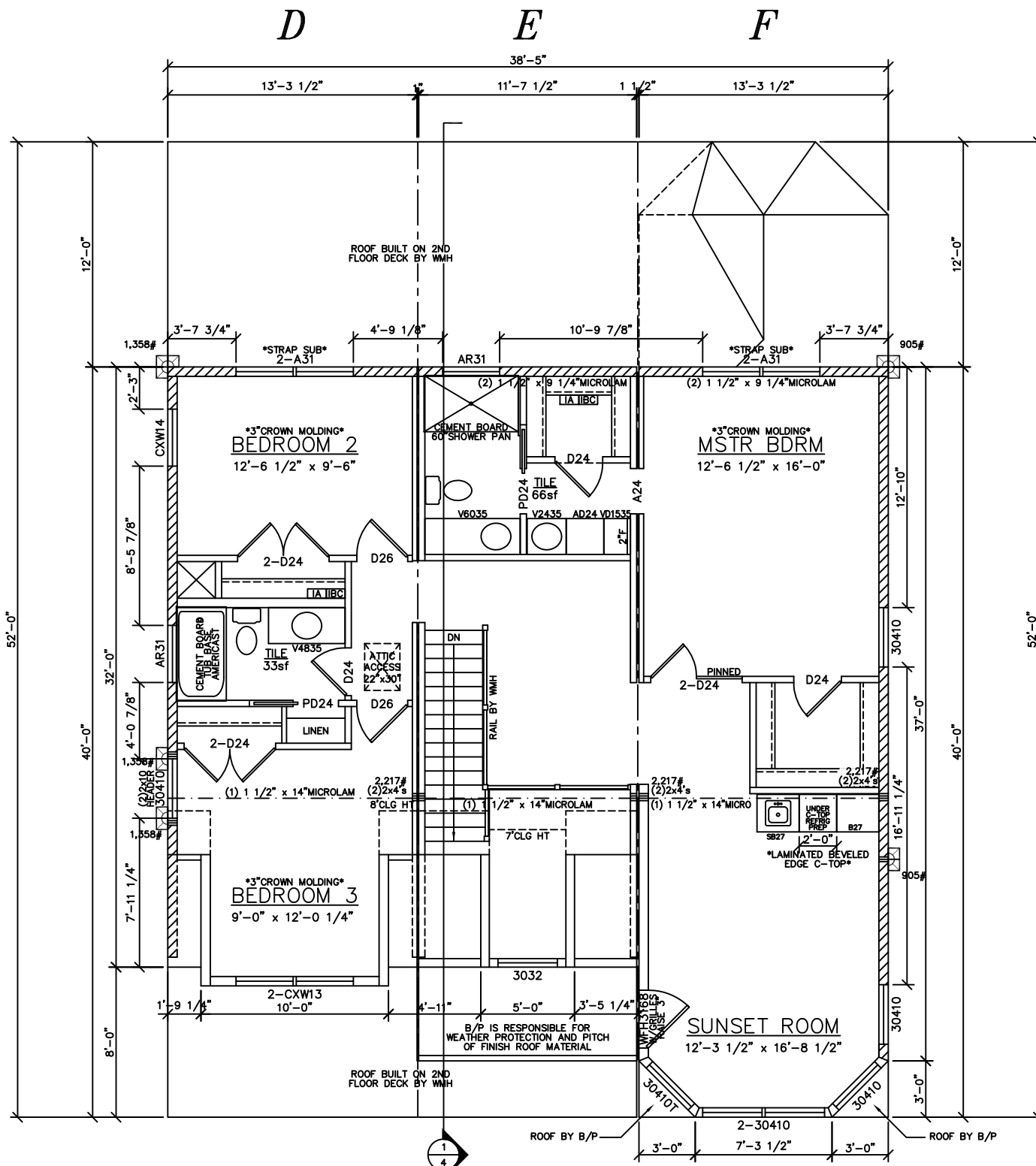
SHEARWALL LEGEND	
ALL FIELD NAILING IS 12" OC SEE BELOW FOR EDGE NAILING	
	SHEAR WALL (436#/LF) w/ 8d COMMON NAILS @ 6" OC
	SHEAR WALL (590#/LF) w/ 8d COMMON NAILS @ 4" OC
	SHEAR WALL (730#/LF) w/ 8d COMMON NAILS @ 3" OC
	HOLDDOWN LOCATION AND REQUIRED LOAD
LOAD #	

ALL WINDOWS & DOORS
NEW JERSEY FLASHING

- FLOOR PLAN NOTES:
- WINDOWS SHALL BE PROTECTED FROM WIND BORNE DEBRIS AS FOLLOWS:
IN ACCORDANCE WITH THE INTERNATIONAL RESIDENTIAL CODE SECTION R301.2.1.2 EXCEPTION, THE BUILDER/ PURCHASER SHALL BE RESPONSIBLE FOR PROVIDING THE REQUIRED EXTERIOR PROTECTION, INCLUDING THE FASTENING.
 - WINDOW AND EXTERIOR DOOR DESIGN PERFORMANCE RATING SHALL CONFORM TO IRC SECTION R301.2.1
 - SHEARWALLS AND HOLDDOWNS ARE NOTED ON THE FLOOR PLAN AS REFERENCED BY THE SHEARWALL SCHEDULE. THE BUILDER/ PURCHASER IS RESPONSIBLE FOR PROVIDING AND INSTALLING ALL HOLDDOWNS AS REQUIRED BY THE SHEAR WALL SYSTEM DESIGN (8 1/2" x 11") SHEETS
 - SEE THE FASTENING SCHEDULE ON SHEET 4C (A STAPLE EQUIVALENT IS INCLUDED FOR THE SHEATHING FASTENING)
 - SEE THE UPLIFT STRAPPING REQUIREMENTS ON SHEET 4C
 - CORNER POSTS INCLUDE (3) STUDS MINIMUM

SEE STANDARD NOTES & DETAILS DWG #8

USE GROUP:	R5	HOMEOWNER:	PE / RA	THIRD PARTY INSPECTION AGENCY
CONST. TYPE:	VB	SERIAL No.	11112	
DESIGNER:	V. GIORGIO	PRODUCTION No.	5874	
DATE:	09/13/11	REVISION		
SCALE:	3/16" = 1'-0"	DATE		
PAGE:		CHECK		
		<p>'6' BOX CAPE CTM-R</p> <p>Westchester Modular Homes Inc 30 Reagans Mill Road, Wingdale, New York, 12594 Tel (845)832-9400 Fax (845)832-6698</p>		



1,352 S.F.
2nd. FLR.

ALL WINDOWS TO BE ANDERSEN STORMWATCH

-SOLID SMOOTH 6 PANEL DOORS-
-UPGRADE BASE & WINDSOR CASING-
-R11 INSULATION ON ALL INTERIOR WALLS
EXCEPT FACE WALLS OF CLOSETS-

115 MPH WIND ZONE

SHEARWALL LEGEND	
ALL FIELD NAILING IS 12" OC SEE BELOW FOR EDGE NAILING	
	SHEAR WALL (436#/LF) w/ 8d COMMON NAILS @ 6" OC
	SHEAR WALL (590#/LF) w/ 8d COMMON NAILS @ 4" OC
	SHEAR WALL (730#/LF) w/ 8d COMMON NAILS @ 3" OC
	HOLDDOWN LOCATION AND REQUIRED LOAD
LOAD #	

NOTE:
ALL WINDOWS WITH A SILL HEIGHT LESS THAN 24"
ABOVE FINISHED FLOOR AND WITH A EXT. HEIGHT OF
GREATER THAN 6'-0" TO GRADE SHALL BE EQUIPPED
WITH FALL PROTECTION SUPPLIED AND INSTALLED BY
B/P ON SITE IN ACCORDANCE W/ R612.3

ALL WINDOWS & DOORS
NEW JERSEY FLASHING

- * DESIGNED TO THE FOLLOWING:
- 2009 INTERNATIONAL RESIDENTIAL CODE, NJ AMENDMENTS
- 2009 NAPHCC NATIONAL STANDARD PLUMBING CODE, NJ AMENDMENTS
- 2008 NATIONAL ELECTRICAL CODE, NJ AMENDMENTS
- 2009 INTERNATIONAL ENERGY CONSERVATION CODE, NJ AMENDMENTS

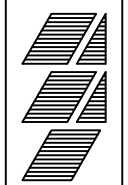
LIGHT & VENTILATION SCHEDULE (SF)			
ROOM	AREA	LIGHT SUPPLIED	VENT SUPPLIED
MSTR BDRM	201	19.8	8.80
BEDROOM 2	121	18.1	11.60
BEDROOM 3	108	24.8	19.20
SUNSET ROOM	206	66.9	47.11

SEE STANDARD NOTES & DETAILS DWG #8

USE GROUP:	R5	THIRD PARTY INSPECTION AGENCY
BUILDER:	VB	PE / RA
CONST. TYPE:	VB	
DESIGNER:	V. GIORGIO	
DATE:	09/13/11	
SCALE:	3/16" = 1'-0"	
PAGE:	3B	
HOMEOWNER:		
SERIAL No.	11112	
PRODUCTION No.	5874	
REVISION		DATE
CHECK		DATE

'6' BOX CAPE CTM-R
SECOND FLOOR PLAN

Westchester Modular Homes Inc
30 Reagans Mill Road, Wingdale, New York, 12594
Tel (845)832-9400 Fax (845)832-6698



3B