



SCALE: 1/4" = 1'0"

DRAWN BY A. J. FEITH
 REGIONAL SALES CONSULTANT
 WESTCHESTER MODULAR
 HOMES, INC.

BUILDER:

DATE:
 JULY 2012

HOMEOWNER:

USE GROUP

5B

CONST. TYPE:

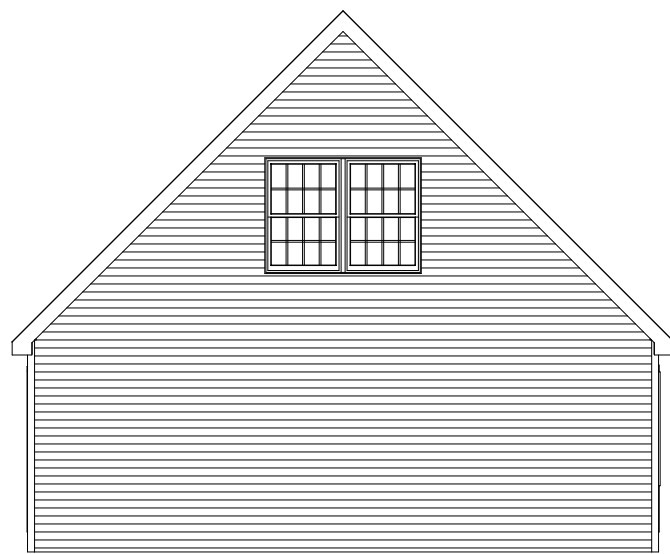
WOOD
 FRAME

POCASSET

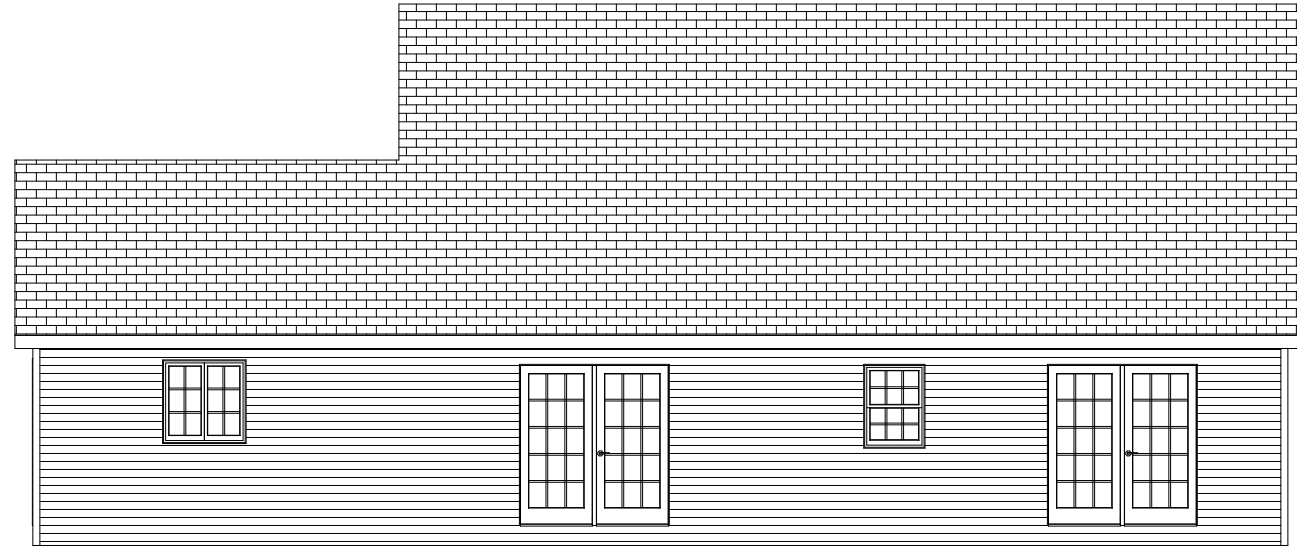
FRONT ELEVATION

PAGE:

1A



LEFT



REAR



RIGHT

SCALE: 1/8" = 1'0"

DRAWN BY A. J. FEITH
REGIONAL SALES CONSULTANT
WESTCHESTER MODULAR
HOMES, INC.

BUILDER:

DATE:
JULY 2012

HOMEOWNER:

USE GROUP

5B

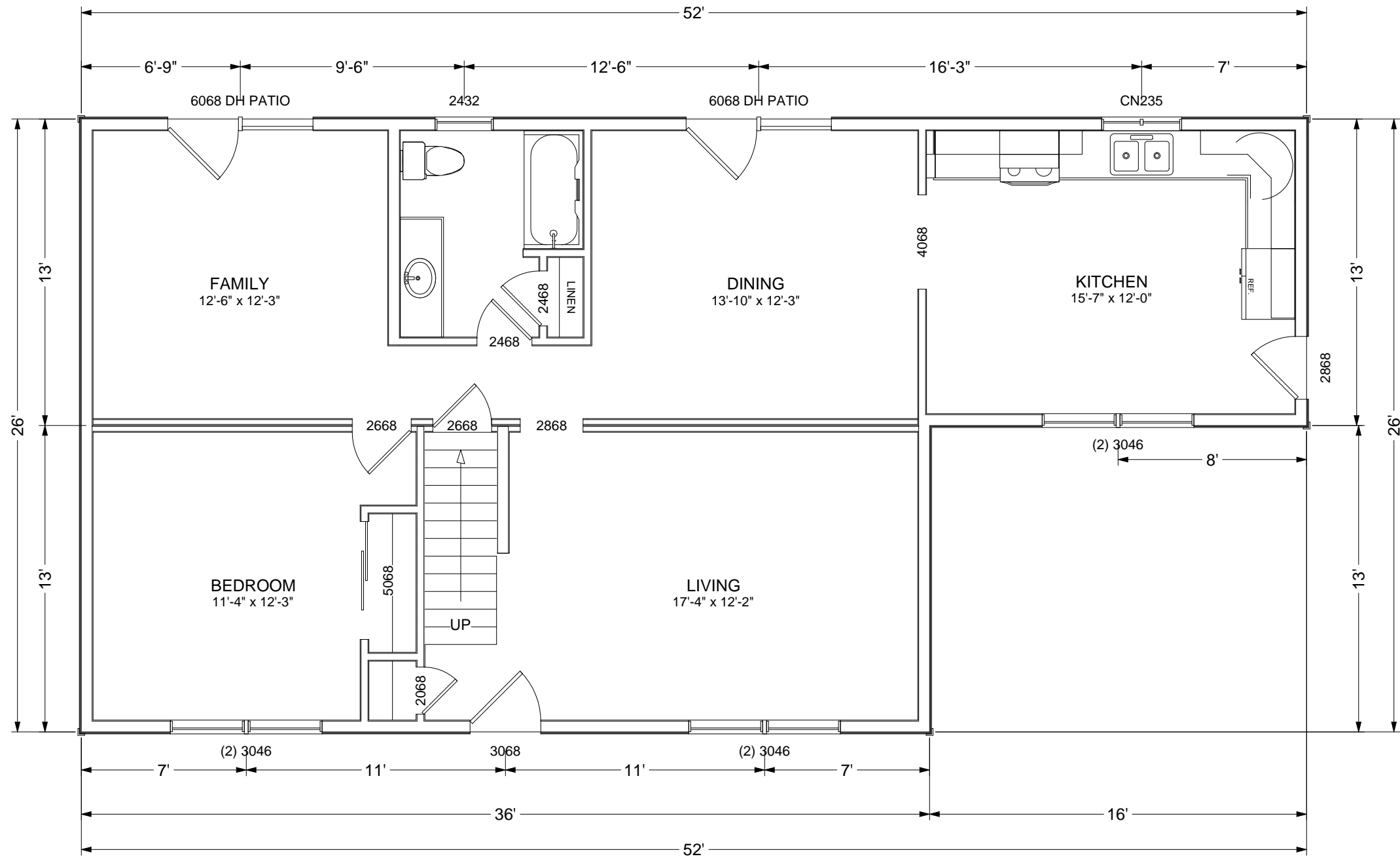
CONST. TYPE:

WOOD
FRAME

PAGE:

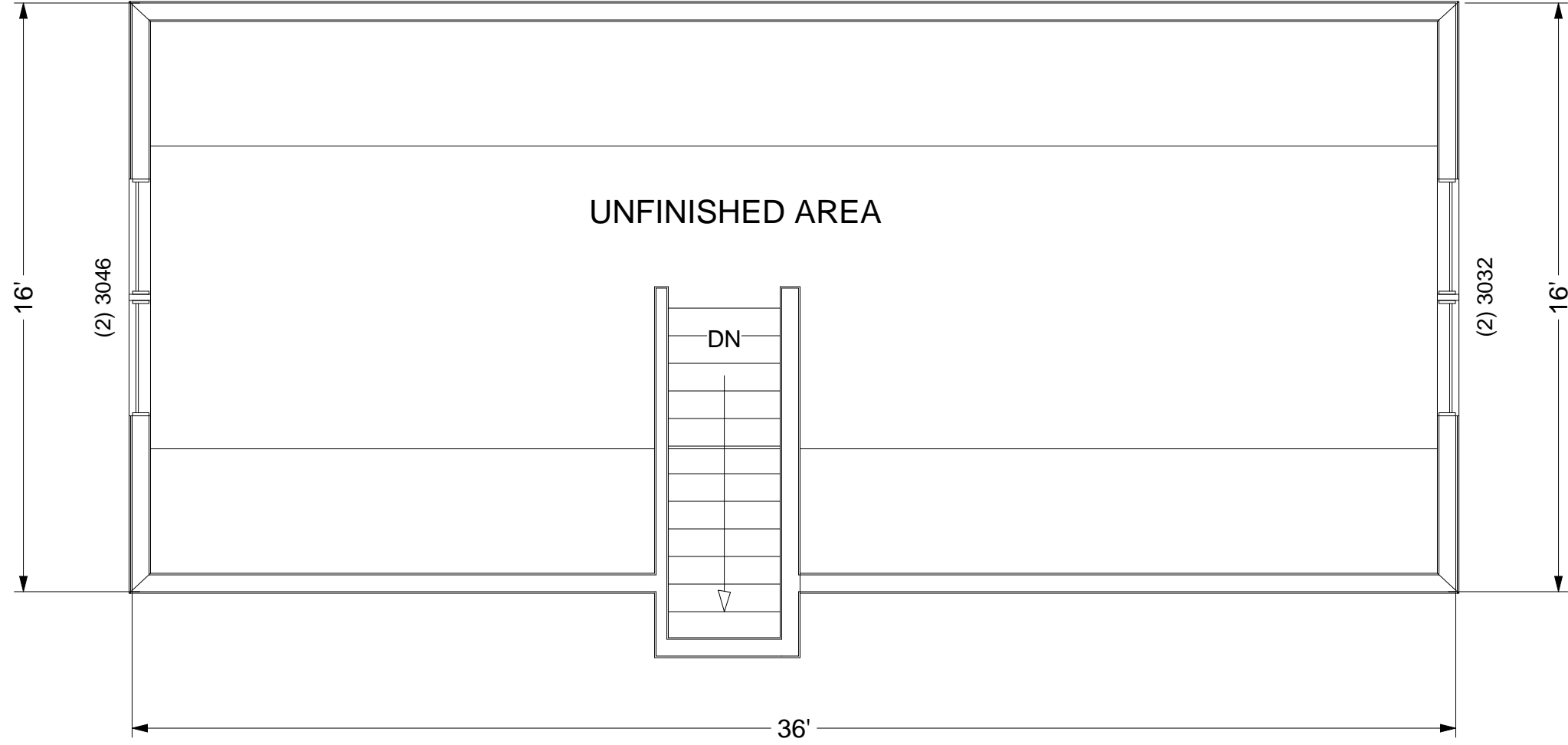
POCASSET
SIDE AND REAR
ELEVATIONS

1B



SCALE: 3/16" = 1'0"

DRAWN BY A. J. FEITH REGIONAL SALES CONSULTANT WESTCHESTER MODULAR HOMES, INC.	BUILDER: HOMEOWNER:	USE GROUP 5B	PAGE: 2A
		CONST. TYPE: WOOD FRAME	
DATE: JULY 2012		POCASSET FLOOR PLAN	



SCALE: 1/4" = 1'0"

DRAWN BY A. J. FEITH REGIONAL SALES CONSULTANT WESTCHESTER MODULAR HOMES, INC.	BUILDER:	USE GROUP	PAGE: 2B
	HOMEOWNER:	5B	
DATE: JULY 2012		CONST. TYPE: WOOD FRAME	